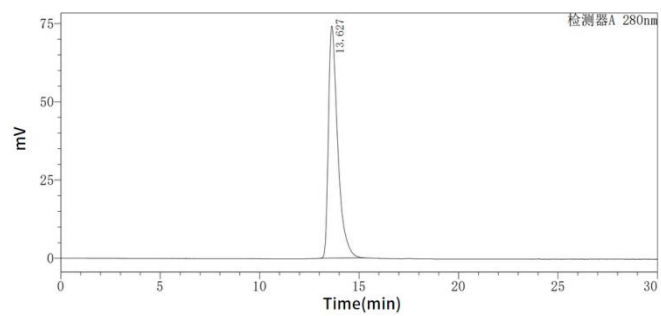


Recombinant Human IL-10

Catalog#:P00134 Derived from *Human Cells*

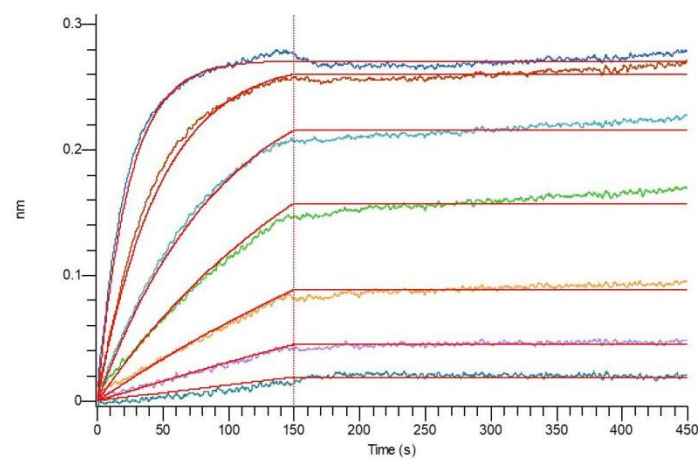
DESCRIPTION	Recombinant Human Interleukin-10 is produced by our Mammalian expression system and the target gene encoding Ser19-Asn178 is expressed. Accession#: P22301 Known as: Interleukin-10; IL-10; Cytokine synthesis inhibitory factor; CSIF; IL10; RP11-262N9.1; IL10A; MGC126450; MGC126451; TGIF
FORMULATION	Lyophilized from a 0.2 µm filtered solution of PBS, pH 7.4.
SHIPPING	The product is shipped at ambient temperature. Upon receipt, store it immediately at the temperature listed below.
STORAGE	Lyophilized protein should be stored at ≤ -20°C, stable for one year after receipt. Reconstituted protein solution can be stored at 2-8°C for 2-7 days. Aliquots of reconstituted samples are stable at ≤ -20°C for 3 months.
RECONSTITUTION	<i>Always centrifuge tubes before opening. Do not mix by vortex or pipetting.</i> <i>It is not recommended to reconstitute to a concentration less than 100µg/ml.</i> Dissolve the lyophilized protein in distilled water. Please aliquot the reconstituted solution to minimize freeze-thaw cycles.
QUALITY CONTROL	Mol Mass: 18.6 KDa AP Mol Mass: 16 KDa, reducing conditions. Purity: Greater than 95% as determined by reducing SDS-PAGE. Endotoxin: < 0.01 EU/µg as determined by LAL test.
BACKGROUND	Interleukin 10(IL10), also known as cytokine synthesis inhibitory factor (CSIF), is a secreted protein and belongs to the IL-10 family. IL-10 is secreted by many activated hematopoietic cell types as well as hepatic stellate cells, keratinocytes, and placental cytotrophoblasts. IL-10 is an anti-inflammatory TH2 cytokine that has a critical role in limiting the immune response to pathogens to prevent host damage. As IL-10 is produced in several T helper populations, it is proposed that it provides a feedback loop to limit the effector functions of macrophages and DCs on T cells. Once expressed, IL-10 signals through the IL-10 receptor (IL-10R) to activate STAT3. As IL-10 is a strong inhibitor of inflammation, it has become a viable biomarker for various diseases and conditions as well as a therapeutic molecule for certain conditions. In addition to elevated levels in parasitic infection, high expression levels of IL-10 are also found in retroviral infections inducing immunodeficiency. The immunosuppressive properties of IL-10 suggest a possible clinical use of IL-10 in suppressing rejections of grafts after organ transplantations.
<div style="display: flex; align-items: center; justify-content: center;"> <div style="margin-right: 20px;">SDS-PAGE</div>  </div> <p>The SDS-PAGE gel shows molecular weight markers (MK) on the left with bands at 120, 90, 60, 40, 30, 20, 16, and 14 kDa. The sample lane (R) shows a single prominent band at approximately 18.6 kDa, indicating high purity of the recombinant IL-10 protein.</p>	

Purity-SEC-HPLC:



Greater than 95% as determined by SEC-HPLC.

Bioactivity-BLI:



Loaded Human IL-10RA-His on HIS1K Biosensor, can bind Human IL-10 with an affinity constant of 1 pM as determined in BLI assay.